



**INHUMAN[®]
GEAR**

MONOLITH
HI-TECH FLOORING FOR
TRAINING AREAS

Quality tested by the best.
Absorbs the force of dropped weights.
Designed to protect subfloors from
impact shock and damage.

IN UNITY WE TRUST

WE BELIEVE IN TEAMWORK. EVERY STEP OF THE WAY.

Training brings people together. They support and challenge each other to become better than they were. For us, the design process follows the same rule; we brought together specialists from a range of fields – industrial designers, constructors, production managers, assemblers, physicians, and professional athletes. A strong team of individuals with a common purpose – to perfect the craft and technology of training.

*Sincerely Yours
Inhuman Gear Team*

MIA

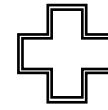
Inhuman Gear was established on the foundation of MIA's 17 years of experience in cooperating with demanding clients: the best companies from around the world. Premier international corporations, leaders in various worldwide industries taught us to adhere to the highest standards of quality and promptness.

WORLDWIDE CUSTOMERS

Our products find use in several thousand locations throughout the world, starting with upscale department stores in New York, Tokyo, London and Paris, to commercial areas in Siberia. As a General Contractor, we completed over 140 complex assignments.

EXPERIENCE

We are able to efficiently organize the entire project from its concept, through design, all the way to installation at the place of destination – including construction work and obtaining legal permits. We plan to ensure that all activities are carried out on time and we strive to achieve the highest satisfaction of investors, as well as users.



HI - CRAFTED

The fine structure granulate used to produce **MONOLITH** makes it stand out from other competing products. The precise density and fine granules in **MONOLITH** makes it almost waterproof and stops humidity from passing through. Moreover, this kind of surface provides easy cleaning.



USER SAFETY

The materials used in the production process have high shock absorbing capacity. This is only increased when combined with the grooved bottom of the tile. **MONOLITH** increases user safety. Our flooring absorbs much more force of the dropped weight than other competing products.



FLOORING FOR FREE WEIGHT AREAS AND OTHER TRAINING ZONES

MONOLITH is perfect for free weight areas and is a great alternative to most competing products.



SURFACE PROTECTION

Unlike the other products, we do not use a two-layer design. **MONOLITH** is wholly made of a granulate with a fine structure, which makes it more efficient in terms of subfloor protection from damage caused by falling heavy objects, such as dumbbells, barbells, bumper plates and kettlebells.



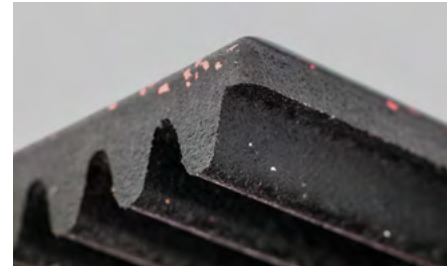
LOW NOISE

Grooved bottom surface of the floor reduces the noise produced by dropped weights much better than most floors with a dimpled bottom.

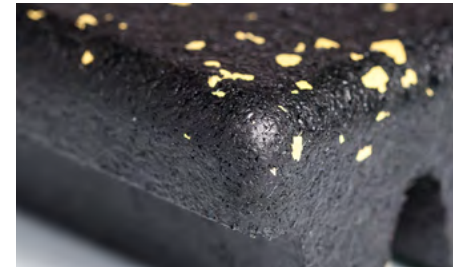


HIGH QUALITY AND ENVIRONMENTALLY FRIENDLY

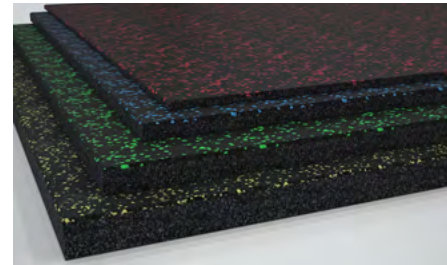
MONOLITH flooring is produced in an EU-based factory that is involved in producing equipment for more than 300 automotive brands, rubber mats for many purposes: public areas, kids' playgrounds, sports areas, construction, and the railway industry. The Production Area follows strict quality and environment-friendly procedures.



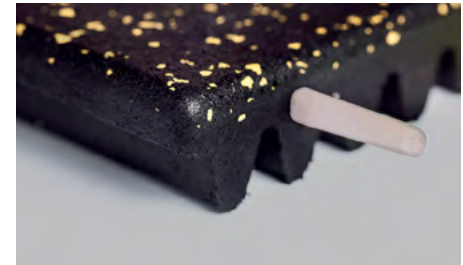
Grooved bottom Surface, fine granulate structure.



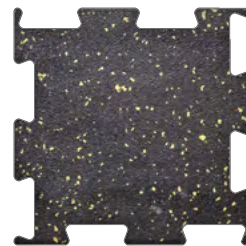
Slightly rounded edges.



Available thicknesses (mm):
10 | 20 | 30 | 40 | 50



Assemble using connector pins.
Without the use of glue.



Puzzle shaped.



Square shaped.



12 mosaic colours.



5 solid colours.

**INHUMAN[®]
GEAR**



**GET YOUR FREE SAMPLE
TO EXPERIENCE MONOLITH!**

**CHECK THE ENTIRE OFFER
OF INHUMAN GEAR PRODUCTS**

MIA Sp. z o.o.
ul. Półtangi 22
PL 30-740 Kraków
info@inhumangear.com

Szymon Markut
Business Leader Innovative Sports
szymon.markut@inhumangear.com
+48 795 521 243